

# Highway101

Enterprise Application Intergration

## Application Integration for Digital Transformation

Realize Data Interface Hub with Solution which connects easily  
and quickly Various Data and Application.

We are innovating Enterprise Information Availability with Application Integration.



# Highway101 (Enterprise Application Integration)

Unity and Standardize Data of Various Enterprise Information System (ERP, PLM, etc.)  
and Realize Digital Transformation (DX)

## Benefits



Obtain data matching and reliability through systematic interface between enterprise systems



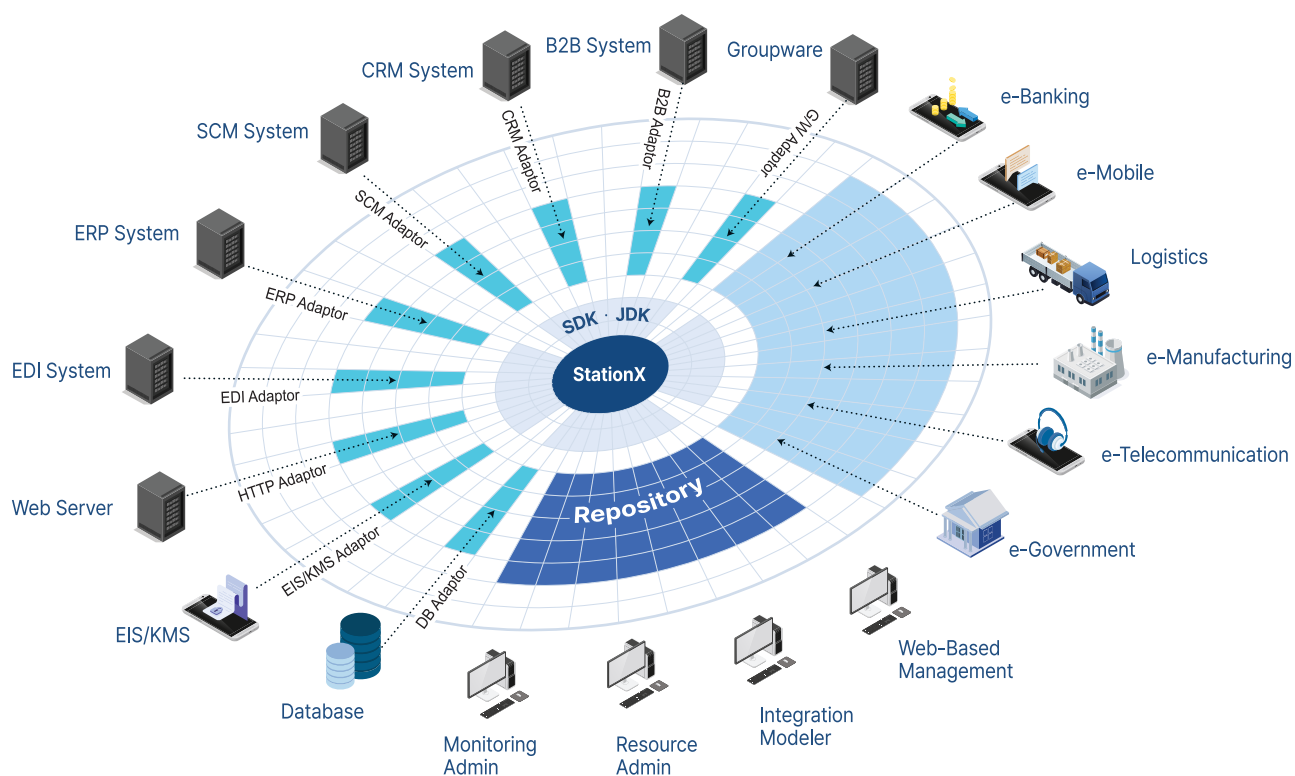
Reduce lead time of system implementation and expansion by realizing low-code interface based on In-house development tool



Swift response through automatic detection of operational changes, errors, and root cause analysis with automatic/manual reprocessing.

## Architecture

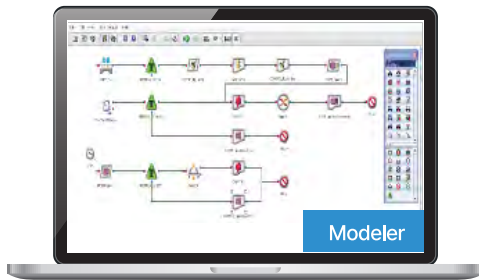
Interfaces between business systems (ERP, MES, PLM, CRM, etc.) are standardized, and the operation management of enterprise applications is integrated through systematic centralized management. It provides a task manager that manages/controls processes and a monitoring administrator that manages interface logic and metadata repositories.



# Features

## 01 Support convenient interface with a GUI tool that minimizes coding

Proceed implementation/test/debugging under GUI based modeler, extract meta data, and proceed modeling/test/error tracking at on-stop action. Provide interface hub environment and make it easy efficient Integrated monitoring/cause tracking/taking action against fail over



## 02

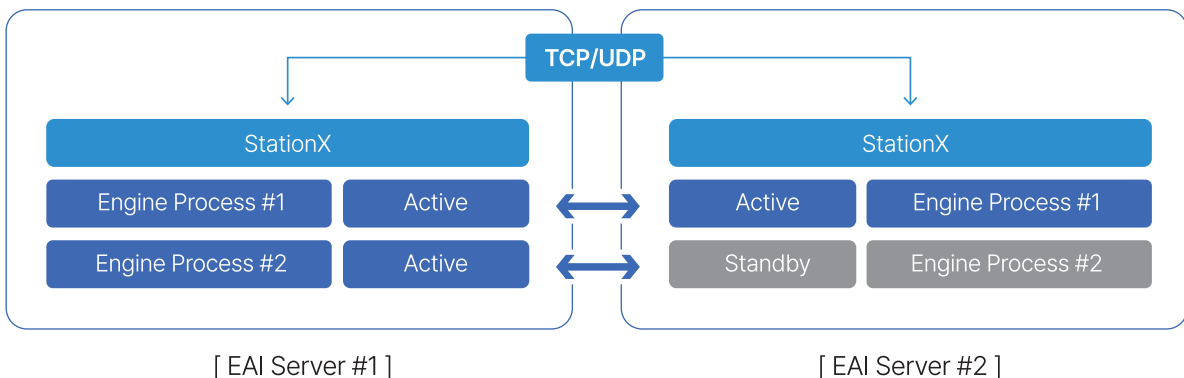
The convenient schema mapping tool (Mapper) simplifies data processing (type conversion, calculation, etc.) and offers a virtual testing feature to reduce interface implementation time. It provides standardized interface model patterns and allows intuitive design through a drag-and-drop method.

## 03 Stably proceed large volume of data

Proceed large volume of data via multi-threading in limited infrastructure environment, and maximize Interface efficiency. For seamless service, provide in-house duplexing and distributed clustering environment (Active-Active) without specific HA composition.

\* GUI(Graphical User Interface) : graphic-based user interface  
\* TCP(Transmission Control Protocol) : 데이터 교환 통신규약  
\* UDP(User Datagram Protocol) : 사용자 데이터그램 통신규약

\* REST(Representational State Transfer) :web-based data interface  
\* HA(High Availability) : high availability server redundancy technique  
\* Clustering : high availability service that operates multiple servers as a single system



# References

## Main Customers

### • High Tech



### • Electric/Electronics



### • Automotive Component



### • Telecom/Logistics/Service



### • Government/Defense



**MIRACOM**  
Miracom Inc.

10F, Hyanggun Tower, 123, Olympic-ro 35-gil,  
Songpa-gu, Seoul, 05510, KOREA  
| Tel 02-2125-6800 | <https://miracom-inc.com>  
Copyright © 2025 Miracom, Inc. All rights reserved.

Youtube



Homepage

